



## PLASTIC FILMS



---

FILMS

---

### SAFE D SOFT FRUIT PROTECTION

Code	Model	Thickness
------	-------	-----------

41715171	SAFE-D	200-250
41715172	SAFE-D VENTOA	



Thickness: 550-650µm at the binding points section, smoothly drops to 200-250µm  
Special binding points | The film can withstand winds of more than Force 8

### GREENHOUSE FILM SPECIAL

Code	Model	Thickness
------	-------	-----------

41715174

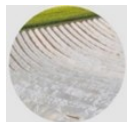


Special tube for transferring the warm air in the greenhouse house | Easy installation  
Gutter easy-applicable

### DALIN POCKET THERMIC

Code	Widths	Thickness
------	--------	-----------

41715176      1,40-1,60-1,80  
2,00-2,20      50

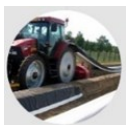


Brilliant solution for growing green asparagus, improves quality while facilitates  
earlier crop growth | Also available in 100 microns for 3 seasons usage

### DALIN POCKET BLACK&WHITE

Code	Widths	Thickness
------	--------	-----------

41715178      1,40 - 1,60      100 - 150

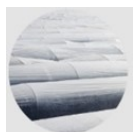


Non-transparent 3-layer film for covering asparagus

### DALIN POCKET THERMIC for WHITE ASPARAGUS

Code	Widths	Color
------	--------	-------

41715180           TRANSPARENT



Transparent plastic film employed to activate the asparagus cultivation | Includes  
cutting edge technology plastic films

### GREENHOUSE FILM

Code	Widths	Thickness
------	--------	-----------

m      µm

41715173



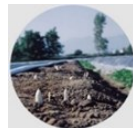
Wide range of specialized greenhouse films for crops protection & suitable conditions for their growth | Several UV stabilization systems | Different properties

### DALIN POCKET ADVANCE

Code	Widths	Thickness
------	--------	-----------

m      µm

41715175



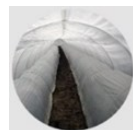
Patented product | Smartly designed valve facilitates the filling of Pockets, once soil enters the pocket is trapped | Rain water escapes via micro perforated holes

### DALIN POCKET EASYFILL

Code	Widths	Thickness
------	--------	-----------

m      µm

41715177



Patented product bearing a Pocket type that facilitates filling the pockets of the film with soil | Special design ease for use, Less time to fill the pockets saving costs

### DALIN POCKET BLACK&WHITE STRIPE

Code	Widths	Thickness
------	--------	-----------

m      µm

41715179

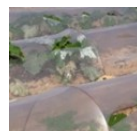


Used for covering asparagus throughout the season and it can be employed for two consecutive seasons.

### DALIN LOW TUNNELS

Code	Specifications	Color
------	----------------	-------

41715181-1	17mu	TRANSPARENT
Great elasticity - Protection against bad weather condition		
41715181-2	17mu	SILVER
Lowers the peak of temperature in daylight & keeps it in good levels in the night		
41715181-3	50mu	THERMIC
Protects crops against frost - Earlier production - Also available in Silver type		



### MULCH FILM PERFORATED

Code	Widths	Thickness
	m	μm

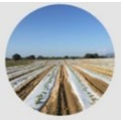


41715182

No additional effort is required from the grower to cut the film before planting | Ease of mind, labor cost savings.

### MULCH FILM BLACK & WHITE

Code	Widths	Thickness
	m	μm



41715184

25

Thin with good mechanical properties | Reflect the sunbeams | Much Cooler Soil temperatures during extremely hot weather | Better crop colorization - good for strawberries

### MULCH FILM DALIN BLACK

Code	Widths	Thickness
	m	μm



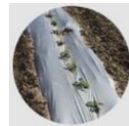
41715186

15

Very thin with great mechanical properties | Good temperature in the ground | Earliness in the harvesting | Cost Effective | Good weed control

### MULCH FILM BLACK & SILVER

Code	Widths	Thickness
	m	μm



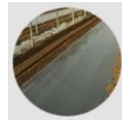
41715183

15

Very thin with great mechanical properties | Reflects the sunbeams | Cooler soil temperatures during extremely hot weather | Repels insects - Healthier crops

### MULCH FILM DALIN BROWN

Code	Widths	Thickness
	m	μm



41715185

20

Thin with good mechanical properties | Allows the heat to pass during the day | Prevents the temperature loss in the night | Earliness in the harvesting | Good weed control | Very good for early crops

### MULCH FILM DALIN TRANSPARENT

Code	Widths	Thickness
	m	μm



41715187

10

Very thin with great mechanical properties | High temperature in the ground | Earliness in the harvesting | Cost Effective | No weed control