



U-PVC



PIPES-FITTINGS

PVC PIPES | VALVES | SOLVENT
CEMENT PVC FITTINGS | THREADED
PVC FITTINGS | FITTINGS | SLEEVE
SOCKET FITTINGS | ADAPTOR FITTINGS



EN ISO 1452	7130	7130	7130
	6 ATM	10 ATM	16 ATM
	code	code	code
63	71306306	71306310	71306316
75	71307506	71307510	71307516
90	71309006	71309010	71309016
110	71301106	71301110	71301116
125	71301256	71301210	71301216
140	71301406	71301410	71301416
160	71301606	71301610	71301616
200	71302006	71302010	71302016
225	71302256	71302210	71302216
250	71302506	71302510	71302516
280	71302806	71302810	71302816
315	71303156	71303110	71303116

Prices of PVC pipes DO NOT include seal ring

PALADUR 16 Atm PVC Pressure Pipe (4m rod)



Model	Specifications
code	mm
52701632	32
52701640	40
52701650	50
52701663	63

SEAL RING (for Sleeve Sockets and PVC pipes)



Model	Specifications	Packing
code	lph	box
70040063	63	500
70040075	75	600
70040090	90	500
70040110	110	350
70040125	125	250
70040140	140	200
70040160	160	150
70040200	200	120
70040225	225	80
70040250	250	60
70040280	280	
70040315	315	

BALL VALVE SOLVENT GLUING



Model	Specifications	Packing
code	mm atm	box
70512020	20 16	50
70512525	25 16	30
70513232	32 16	50A
70514040	40 16	30A
50515050	50 16	24A
50516363	63 16	15E
50517575	75 10	10E
50519090	90 10	10E
70511111	110 10	2A

BALL VALVE THREADED FEMALE Single Union



Model	Specifications	Packing
code	inch atm	box
70550001	1/2" 16	60
70550002	3/4" 16	40
70550003	1" 16	60A
70550004	1 1/4" 16	30A
50550005	1 1/2" 16	32A
50550006	2" 16	15A
70550007	2 1/2" 10	4A
70550008	3" 10	4A
70550009	4" 10	2A

AIR RELEASE VALVE



Model	Specifications	Packing
code	inch atm	box
Double Acting (automatic)		
32772002	3/4" 16	55A
32772003	1" 16	55A
70170106	2" 16	8
Simple Acting (Kinetic)		
70170006	2" 16	8

NON RETURNABLE VALVE SOLVENT GLUING



Model	Specifications	Packing
code	mm atm	box
50165000	50 16	24A
50166300	63 16	12A
70167500	75 10	3A
70169000	90 10	3A
70161100	110 10	2A

NON RETURNABLE VALVE THREADED



Model	Specifications	Packing
code	inch atm	box
50150005	1 1/2" 16	24A
50150006	2" 16	12A
70150007	2 1/2" 10	3A
70150008	3" 10	3A
70150009	4" 10	2A

BALL VALVE THREADED FEMALE



Model	Specifications	Packing
code	inch atm	box
70540101	1/2"x1/2"	16 50
70540202	3/4"x3/4"	16 30
70540303	1"x1"	16 50A
70540404	1 1/4"x1 1/4"	16 30A
50540505	1 1/2"x1 1/2"	16 24A
50540606	2"x2"	16 15E
50540707	2 1/2"x2 1/2"	10 10E
50540808	3"x3"	10 10E
70540909	4"x4"	10 2A

BUTTERFLY VALVE - EPDM seals (Loose Flange connection)



Model	Specifications	Packing
code	mm atm	box
70520630	63 10	4
70520750	75 10	4
70520900	90 10	4
70521100	110 10	4
70521250	125 10	4
70521400	140 10	4
70521600	160 10	4
70522250	200-225	6 1
70522500	250	6 1
70523150	315	6 1

Prices DO NOT include Loose Flange (5106-7106) and Stub Flange (5107-7107)

WATER CHECK VALVE (connection with loose flange)



Model	Specifications	Packing
code	mm atm	box
70217500	75 10	
70219000	90 10	
70211100	110 10	
70211250	125 10	
70211400	140 10	
70211600	160 6	
70212000	200 6	
70212250	225 6	

Prices include Loose Flange (5106-7106) & Stub Flange (5107-7107)

FLAP CHECK VALVE



Model	Specifications	Packing
code	inch atm	box
70180007	2 1/2" 8	1
70180008	3" 8	1
70180009	4" 8	1

FOOT VALVE



Model	Specifications	Packing
code	inch atm	box
70190007	2 1/2" 10	1
70190008	3" 10	1
70190009	4" 10	1



SOLVENT CEMENT JOINTED FITTINGS

ELBOW 90° SOLVENT GLUING



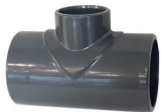
Model	Specifications		Packing
	code	mm	atm
50710020	20	16	780E
50710025	25	16	400A
50710032	32	16	200A
50710040	40	16	120A
50710050	50	16	85E
50710063	63	16	50E
50710075	75	16	30E
50710090	90	16	20E
50710110	110	16	15H
50710125	125	16	12H
70710140	140	16	6H
50710160	160	16	3E
70710200	200	10	2H
70710225	225	10	2
70710250	250	10	1H
70710280	280	10	1
70710315	315	10	1

ELBOW 45° SOLVENT GLUING



Model	Specifications		Packing
	code	mm	atm
70720020	20	16	300
70720025	25	16	400A
70720032	32	16	200A
70720040	40	16	150A
50720050	50	16	100A
50720063	63	16	60E
50720075	75	16	32E
50720090	90	16	30H
50720110	110	16	12E
70720125	125	16	12H
70720140	140	16	6H
70720160	160	16	5H
70720200	200	10	2H
70720225	225	10	1H
70720250	250	10	1H
70720280	280	10	1H
70720315	315	10	1

REDUCING TEE 90° SOLVENT GLUING



Model	Specifications		Packing
	code	mm	atm
70622520	25x20x25		250A
70624020	40x20x40		70A
70624025	40x25x40		70A
70624032	40x32x40		70A
70625025	50x25x50		90H
70625032	50x32x50		90H
50626332	63x32x63		33E
70626340	63x40x63		50H
50626350	63x50x63		33E
50627563	75x63x75		24E
70629050	90x50x90		20H
50629063	90x63x90		15E
50629075	90x75x90		15E
50621163	110x63x110		11H
50621175	110x75x110		11H
50621190	110x90x110		11H
70621275	125x75x125		8H
70621290	125x90x125		8H
50621211	125x110x125		8H
70621611	160x110x160		3H
70621612	160x125x160		3H
70621614	160x140x160		3H

PN 16 Atm

BEND 90° SOLVENT GLUING



Model	Specifications		Packing
	code	mm	atm
70770050	50	16	50H
70770063	63	16	25H
70770075	75	16	15H
70770090	90	16	8H
70770110	110	16	5H

TEE 90° SOVENT GLUING



Model	Specifications		Packing
	code	mm	atm
50610020	20	16	420E
50610025	25	16	300E
50610032	32	16	140A
50610040	40	16	80A
50610050	50	16	67E
50610063	63	16	33E
50610075	75	16	24E
50610090	90	16	15E
50610110	110	16	11H
50610125	125	16	8H
50610140	140	16	5H
50610160	160	16	2E
70610200	200	10	2
70610225	225	10	1H
70610250	250	10	1H
70610280	280	10	1
70610315	315	10	1



SOLVENT CEMENT JOINTED FITTINGS

REDUCER SOLVENT GLUING



Model	Specifications			Packing
	code	mm	atm	box
70910201	20x16	16	500	
50912520	25x20	16	2100E	
50913220	32x20	16	1200E	
50913225	32x25	16	1200E	
50914032	40x32	16	700A	
50915025	50x25	16	400A	
50915032	50x32	16	400A	
50915040	50x40	16	400A	
50916332	63x32	16	200A	
50916340	63x40	16	200A	
50916350	63x50	16	200A	
70917550	75x50	16	100A	
50917563	75x63	16	120A	
70919050	90x50	16	100H	
50919063	90x63	16	72A	
50919075	90x75	16	72A	
50911107	110x75	16	55E	
50911109	110x90	16	55E	
50911259	125x90	16	40E	
50911211	125x110	16	40E	
50911411	140x110	16	36H	
50911412	140x125	16	36H	
50911611	160x110	16	15E	
50911612	160x125	16	15A	
50911614	160x140	16	17E	
70912016	200x160	10	10H	
70912216	225x160	10	6H	
70912225	225x200	10	7H	
70910516	250x160	10	6H	
70910502	250x200	10	6H	
70910522	250x225	10	6H	
70912822	280x225	10	4H	
70912805	280x250	10	5H	
70913122	315x225	10	3	
70913105	315x250	10	2H	
70913128	315x280	10	2H	

REDUCING SOCKET SOLVENT GLUING



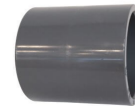
Model	Specifications			Packing
	code	mm	atm	box
50826350	63x50	16	110E	
50827563	75x63	16	48E	
50829063	90x63	16	54E	
50829075	90x75	16	54H	
50821190	110x90	16	42H	
50821211	125x110	16	20H	

CAP FEMALE SOLVENT GLUING



Model	Specifications			Packing
	code	mm	atm	box
51210020	20	16	1800E	
51210025	25	16	900E	
51210032	32	16	600A	
51210040	40	16	350A	
51210050	50	16	200A	
51210063	63	16	100A	
51210075	75	16	75E	
51210090	90	16	60H	
51210110	110	16	33E	
51210125	125	16	20E	
51210140	140	16	18E	
51210160	160	16	16H	
71210200	200	10	6H	

SOCKET SOLVENT GLUING



Model	Specifications			Packing
	code	mm	atm	box
50810020	20	16	1200E	
50810025	25	16	600E	
50810032	32	16	400A	
50810040	40	16	200A	
50810050	50	16	116A	
50810063	63	16	80E	
50810075	75	16	48E	
50810090	90	16	35E	
50810110	110	16	30H	
50810125	125	16	20H	
50810140	140	16	12H	
50810160	160	16	6E	
70810200	200	10	3H	
70810225	225	10	2H	
70810250	250	10	2H	
70810280	280	10	2	
70810315	315	10	1	

UNION SOLVENT GLUING



Model	Specifications			Packing
	code	mm	atm	box
70960020	20	16	150	
70960025	25	16	200A	
70960032	32	16	120A	
70960040	40	16	80A	
50960050	50	16	70E	
50960063	63	16	48E	
50960075	75	16	25E	
50960090	90	16	22H	
70960110	110	16	12H	

LOOSE FLANGE



Model	Specifications		Packing
code	mm	atm	box
71060020	20	16	300A
71060025	25	16	150A
71060032	32	16	150A
71060040	40	16	60
71060050	50	16	65
51060063	63	16	60A
51060075	75	16	60E
51060090	90	16	37A
51060110	110	16	40E
51060125	125	16	35E
51060140	140	16	20A
51060160	160	16	14A
71060200	200	10	10H
71060225	225	10	10H
71060250	250	10	8H
71060280	280	10	6H
71060315	315	10	1

RUBBER GASKET FOR FLANGE



Model	Specifications		Packing
code	mm		box
71090063	63		
71090075	75		
71090090	90		
71090110	110		
71090125	125		
71090140	140		
71090160	160		
71090200	200		
71090225	225		
71090250	250		

TANK FLANGE for concrete pools



Model	Specifications		Packing
code	mm	atm	box
51116363	63x63	16	60H
51110663	2"x63	16	60H

CAP MALE SOLVENT GLUING



Model	Specifications		Packing
code	mm	atm	box
51200032	32	16	1080E

MANIFOLD SOLVENT GLUING



Model	Specifications		Female
code	mm	atm	Outlets
71406350	50	16	3-50mm
71406363	63	16	3-63mm

PRIMER



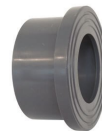
Model	Specifications		Packing
code	cc		box
70140250	250		24

CROSS SOLVENT GLUING



Model	Specifications		Packing
code	mm	atm	box
71160025	25	16	80
71160032	32	16	100A
71160040	40	16	60A
71160050	50	16	35A
51160063	63	16	20A
51160075	75	16	18H
51160090	90	16	10E
71160110	110	16	7H

STUB SERRATED SOLVENT GLUING



Model	Specifications		Packing
code	mm	atm	box
71070020	20	16	1100A
71070025	25	16	700A
71070032	32	16	200
71070040	40	16	200A
51070050	50	16	200A
51070063	63	16	100E
51070075	75	16	72E
51070090	90	16	75H
51070110	110	16	33E
51070125	125	16	16A
51070140	140	16	14E
51070160	160	16	12E
71070200	200	10	7H
71070225	225	10	6H
71070250	250	10	4H
71070280	280	10	2H
71070315	315	10	1

PIPE CLIP



Model	Specifications		Packing
code	mm	atm	box
71250020	20	10	1100A
71250025	25	10	900A
71250032	32	10	600A
71250040	40	10	370A
71250050	50	10	240A
71250063	63	10	280H
71250075	75	10	240H
71250090	90	10	100H
71250110	110	10	100H

Sizes from 40mm up to 110mm are provided with Safety Lock

PVC GLUE (GRAY)



Model	Specifications		Packing
code	cc		box
70152500	250		24
70155000	500		12

PVC GLUE (TRANSPARENT)



Model	Specifications		Packing
code	cc		box
70152501	250		24
70155001	500		12

SOCKET THREADED



Model	Specifications	Packing
code	inch	atm
70840101	1/2"x1/2"	16 350
70840202	3/4"x3/4"	16 450A
70840303	1"x1"	16 250A
70840404	1 1/4"x1 1/4"	16 190A
50840505	1 1/2"x1 1/2"	16 116A
50840606	2"x2"	16 80E
50840707	2 1/2"x2 1/2"	16 48E
50840808	3"x3"	16 30E
50840909	4"x4"	16 30H

ELBOW 90° THREADED



Model	Specifications	Packing
code	inch	atm
70730101	1/2"x1/2"	16 600A
70730202	3/4"x3/4"	16 300A
70730303	1"x1"	16 170A
70730404	1 1/4"x1 1/4"	16 100A
70730505	1 1/2"x1 1/2"	16 60A
50730606	2"x2"	16 50E
50730707	2 1/2"x2 1/2"	16 30E
50730808	3"x3"	16 20E
50730909	4"x4"	16 15H

ELBOW 45° THREADED



Model	Specifications	Packing
code	inch	atm
70740101	1/2"x1/2"	16 300
70740202	3/4"x3/4"	16 400A
70740303	1"x1"	16 200A
70740404	1 1/4"x1 1/4"	16 150A
70740505	1 1/2"x1 1/2"	16 170H
70740606	2"x2"	16 90H
70740707	2 1/2"x2 1/2"	16 50H
70740808	3"x3"	16 30H
70740909	4"x4"	16 16H

TEE 90° THREADED



Model	Specifications	Packing
code	inch	atm
70650101	1/2"	16 400A
70650202	3/4"	16 220A
70650303	1"	16 120A
70650404	1 1/4"	16 70A
70650505	1 1/2"	16 80H
50650606	2"	16 33E
50650707	2 1/2"	16 24E
50650808	3"	16 15E
50650909	4"	16 11H

NIPPLE



Model	Specifications	Packing
code	inch	atm
70280101	1/2"x1/2"	16 450
70280202	3/4"x3/4"	16 600A
70280303	1"x1"	16 350A
70280404	1 1/4"x1 1/4"	16 220A
50280505	1 1/2"x1 1/2"	16 220E
50280606	2"x2"	16 120A
50280707	2 1/2"x2 1/2"	16 60A
50280808	3"x3"	16 56E
50280909	4"x4"	16 30E

REDUCING NIPPLE



Model	Specifications	Packing
code	inch	atm
70290201	3/4"x1/2"	16 350
70290302	1"x3/4"	16 450
70290403	1 1/4"x1"	16 270A
50290504	1 1/2"x1 1/4"	16 230A
50290605	2"x1 1/2"	16 120A
50290706	2 1/2"x2"	16 72E
70290806	3"x2"	16 50A
50290807	3"x2 1/2"	16 48A
50290908	4"x3"	16 36E

REDUCER (MALE-FEMALE)



Model	Specifications	Packing
code	male-female	atm
70300201	3/4"x1/2"	16 380
70300302	1"x3/4"	16 500A
70300403	1 1/4"x1"	16 250A
50300504	1 1/2"x1 1/4"	16 250A
50300605	2"x1 1/2"	16 150A
50300706	2 1/2"x2"	16 90A
50300807	3"x2 1/2"	16 72A
50300908	4"x3"	16 30A

CAP FEMALE THREADED



Model	Specifications	Packing
code	inch	atm
71200001	1/2"	16 500
71200002	3/4"	16 300
71200003	1"	16 180
71200004	1 1/4"	16 120
71200005	1 1/2"	16 230A
51201006	2"	16 160E
51201007	2 1/2"	16 72A
51201008	3"	16 60E
51201009	4"	16 30A

THREADED FITTINGS

UNION THREADED (F-F)



Model	Specifications	Packing	
code	inch	atm	box
70980101	1/2"x1/2"	16	150
70980202	3/4"x3/4"	16	200A
70980303	1"x1"	16	120A
70980404	1 1/4"x1 1/4"	16	80A
50980505	1 1/2"x1 1/2"	16	70A
50980606	2"x2"	16	48E
50980707	2 1/2"x2 1/2"	16	25E
50980808	3"x3"	16	22H
70980909	4"x4"	16	15H

UNION THREADED (M-F)



Model	Specifications	Packing	
code	inch	atm	box
50950505	1/2"x1/2"	16	70E
50950606	2"x2"	16	48E

MANIFOLD MALE THREADED



Model	Manifold	Outlets	Packing
code	female	male	box
71410605	2"	3-1 1/2"	4
71410606	2"	3-2"	4

PN10

SLEEVE SOCKET FITTINGS

INLET LINE MALE THREADED



Model	Specifications	Packing	
code	mm-inch	atm	box
51016306	63x2"	16	50E
51017507	75x2 1/2"	16	40E
51019008	90x3"	16	36H
51011109	110x4"	16	24H
71011210	125x5"	16	-
71011410	140x5"	16	-
71011611	160x6"	16	-

GIBAULT



Model	Specifications	Packing	
code	mm	atm	box
51260063	63	16	40E
51260075	75	16	25E
51260090	90	16	24H
51260110	110	16	12H

INLET LINE MALE THREADED-SLEEVE SOCKET



Model	Specifications	Packing	
code	mm-inch	atm	box
50021636	63x2"	10	50E
50021757	75x2 1/2"	10	20A
50021908	90x3"	10	30H
50021119	110x4"	10	18H

WITHOUT RING SEAL

PRICES OF PVC SLEEVE SOCKET (5002) DO NOT INCLUDE RING SEAL (7004)

SEAL RING (FOR SLEEVE SOCKETS AND PVC PIPE)



Model	Specifications	Packing
code	mm	box
70040063	63	500
70040075	75	600
70040090	90	500
70040110	110	350
70040125	125	250
70040140	140	200
70040160	160	150
70040200	200	120
70040225	225	80
70040250	250	60
70040280	280	
70040315	315	

SLEEVE SOCKET (WITHOUT SEAL RING-MOULDED)



Model	Specifications	Packing	
code	mm	atm	box
50016310	63	10	30H
50017510	75	10	24H
50019010	90	10	15H
50019016	90	16	15H
50011110	110	10	11H
70011210	125	10	
70011410	140	10	
70011610	160	10	

PRICES OF PVC SLEEVE SOCKET DO NOT INCLUDE RING SEAL



ADAPTOR THREADED SOCKET SOLVENT GLUING



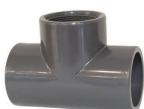
Model	Specifications	Packing
code	int-ext-MT	atm
50922001	20x25x1/2"	16
50922501	25x32x1/2"	16
50922502	25x32x3/4"	16
50923203	32x40x1"	16
50924004	40x50x1 ^{1/4} "	16
50924005	40x50x1 ^{1/2} "	16
50925004	50x63x1 ^{1/4} "	16
50925005	50x63x1 ^{1/2} "	16
50925006	50x63x2"	16
70926305	63x75x1 ^{1/2} "	16
50926306	63x75x2"	16
70926307	63x75x2 ^{1/2} "	16
50927506	75x90x2"	16
50927507	75x90x2 ^{1/2} "	16
50927508	75x90x3"	16
50929006	90x110x2"	16
50929007	90x110x2 ^{1/2} "	16
50929008	90x110x3"	16
50929009	90x110x4"	16
50921108	110x125x3"	16
50921109	110x125x4"	16

ADAPTOR SOCKET (FEMALE THREADED- SOLVENT GLUING)



Model	Specifications	Packing
code	mm x inch	atm
50832001	20x1/2"	16
50832502	25x3/4"	16
50833203	32x1"	16
50834004	40x1 ^{1/4} "	16
50835005	50x1 ^{1/2} "	16
50836306	63x2"	16
50837507	75x2 ^{1/2} "	16
50839008	90x3"	16
50831109	110x4"	16

TEE FEMALE THREADED SOCKET SOLVENT GLUING



Model	Specifications	Packing
code	mm-inch-mm	atm
70632001	20x1/2"x20	16
70632502	25x3/4"x25	16
70633203	32x1"x32	16
70634004	40x1 ^{1/4} "x40	16
70635005	50x1 ^{1/2} "x50	16
50636306	63x2"x63	16
50639006	90x2"x90	16
50639008	90x3"x90	16
50631109	110x4"x110	16

ELBOW 90° FEMALE THREADED- SOLVENT GLUING



Model	Specifications	Packing
code	mm-inch	atm
70702001	20x1/2"	16
70702502	25x3/4"	16
70703203	32x1"	16
70704004	40x1 ^{1/4} "	16
70705005	50x1 ^{1/2} "	16
50706306	63x2"	16
50707507	75x2 ^{1/2} "	16
50709008	90x3"	16
50701109	110x4"	16

UNION MALE (THREADED- SOLVENT GLUING)



Model	Specifications	Packing
code	inch	atm
50995005	50x1 ^{1/2} "	16
50996306	63x2"	16

UNION FEMALE THREADED- SOLVENT GLUING



Model	Specifications	Packing
code	mm-inch	atm
70972001	20x1/2"	16
70972502	25x3/4"	16
70973203	32x1"	16
70974004	40x1 ^{1/4} "	16
50975005	50x1 ^{1/2} "	16
50976306	63x2"	16
50977507	75x2 ^{1/2} "	16
50979008	90x3"	16
70971109	110x4"	16

